

# REAL ESTATE

**new on the market.**



**MLS # 2922260**

**Address: 152 - 201 & 202 Civitas St. Mt. Pleasant**

- **I'on Commercial Center**
- **Mathis Ferry Rd. & Hwy 17**
- **Attractive Building**
- **2nd floor office**
- **TMS #: 535-06-00-058**
- **Contact: John Elliott for more information**  
**(843) 830-3272**
- **Available Space: +/- 637 sq ft Office**
- **Lease Rate: \$1600.00/ month**
- **Lease Term: 3 years or greater**
- **Zoning: Neighborhood Commercial**
- **Utilities: All at site**
- **Located inside of I'on**

### **Directions :**

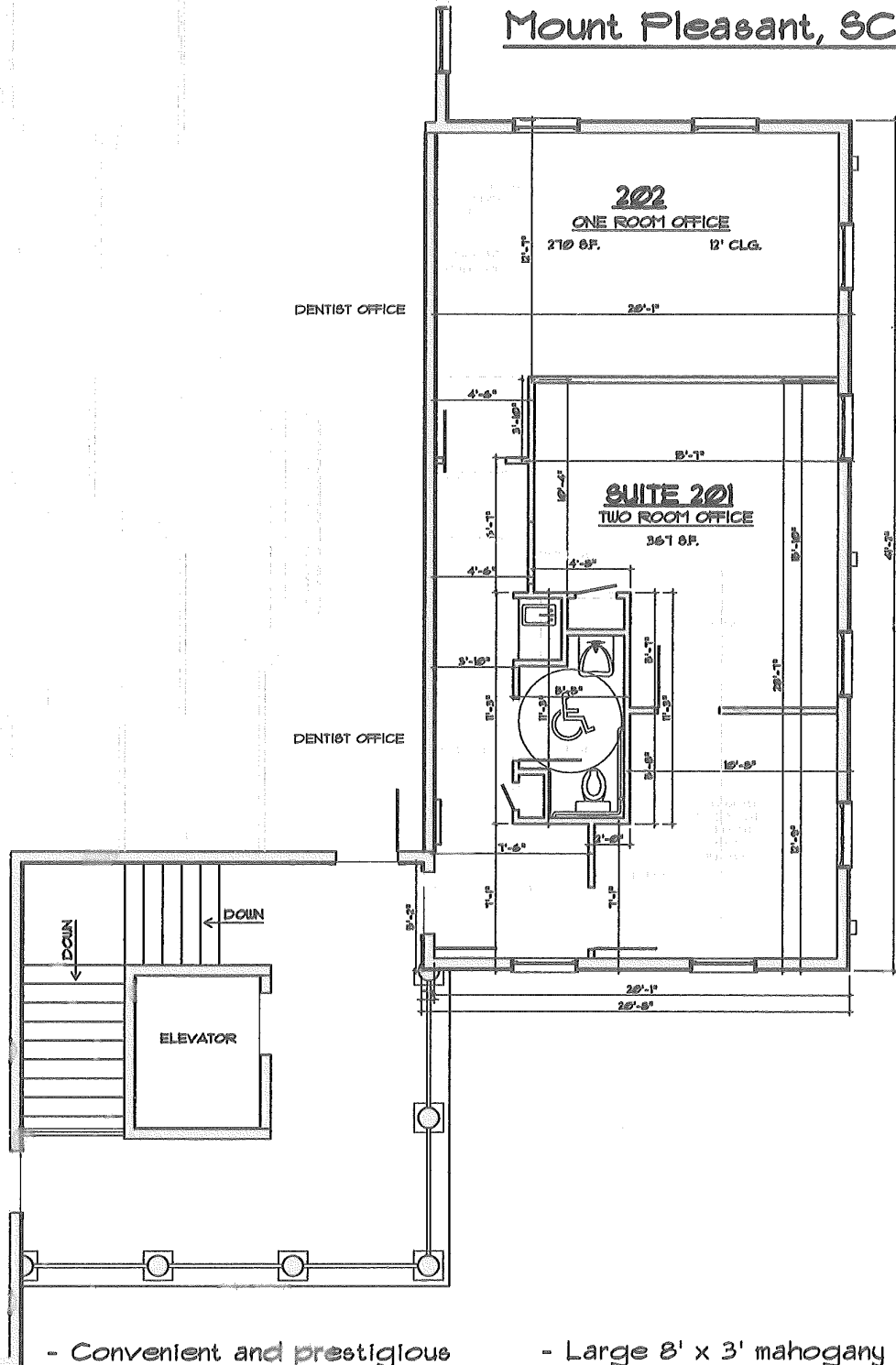
**Take Shellmore off Johnnie Dodds Blvd. into I'on. Space is located in the first building on the right.**



Commercial and Investment Real Estate  
242 Mathis Ferry Road, Suite 200 Mt. Pleasant, SC 29464  
(843) 884-8976 (843) 884-0177  
[www.howellandassociates.net](http://www.howellandassociates.net)

SUITES 201 & 202

152 Civitas, 1<sup>st</sup> on  
Mount Pleasant, SC



- Convenient and prestigious location with off-street parking
- Elevator & wide stairway access to the second floor
- Second floor porch overlooks landscaped area
- Walk to lunch places
- Large 8' x 3' mahogany & glass entry doors
- Offices have lots of natural light from large, openable windows
- Window blinds are furnished
- Suite 202 has wood laminate floor and 12' high ceiling with c.l.g. fan
- Shared kitchenette & restroom